

# MBX 5G

5G Quad Cellular Mobile Powerhouse

peplink | PEPWAVE

## Best of both worlds

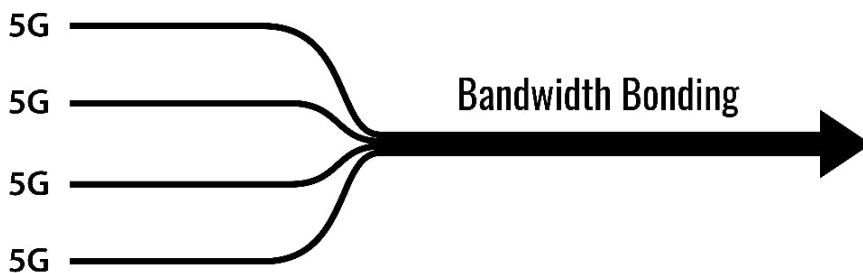
MBX 5G is a quad cellular mobile powerhouse with redundant SIM slots and multi-radio capabilities providing speed, reliability, and coverage by combining the best of 5G and LTE.

## Portability

Its compact form allows it to be deployed in a wide variety of situations such as vehicles, vessels, and branch networks.

## Compatibility with SIM injector

Its compatibility allows for upgradable modules for further customization to suit any deployment needs.

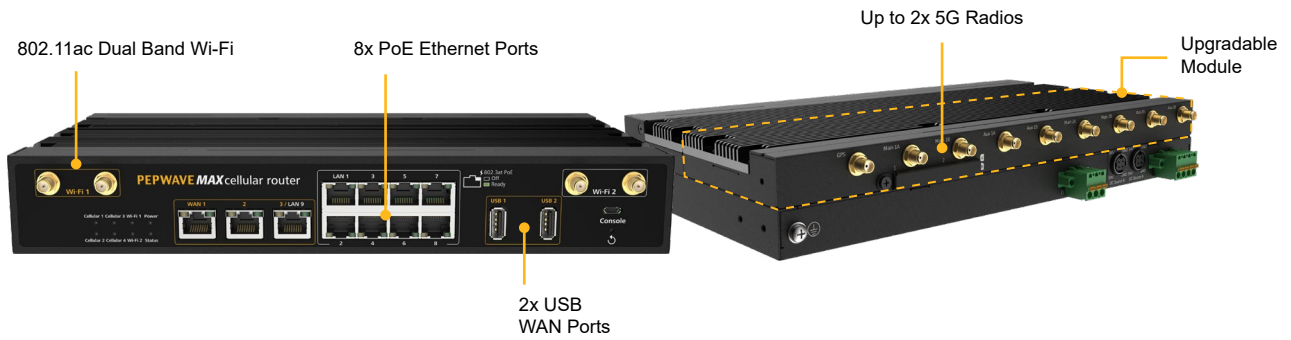


## Optimize your traffic

Whether you need speed or cost-effectiveness, use Traffic Steering to guide each packet to the most suitable connection.



# HD2 MBX 5G



## Specifications

<b>WAN Interface</b>	2x Embedded Cellular Modems with Redundant SIM Slots 3x GE* 2x USB 2.0 Interface	<b>Power Output</b>	Up to Eight 802.3at PoE Outputs*
<b>LAN Interface</b>	9x GE*	<b>Power Consumption</b>	55 W (max.)
<b>Wi-Fi Interface</b>	802.11ac/a/b/g/n, 1166 Mbps 2x2MIMO Wi-Fi WAN and/or AP Simultaneous Dual-Band	<b>Dimensions</b>	1.7 x 11.5 x 7.0 inches 43 x 292 x 177 mm
<b>Router Throughput</b>	2.5 Gbps	<b>Weight</b>	7.28 pounds 3.3 kg
<b>PepVPN Throughput (No Encryption)</b>	600 Mbps	<b>Operating Temperature</b>	-40°– 149 °F -40°– 65 °C
<b>PepVPN Throughput (256-bit AES)</b>	500 Mbps	<b>Humidity</b>	15%–95% (non-condensing)
<b>5G Cellular Data Rate® (Downlink/Uplink)</b>	5G: 4 Gbps / 700 Mbps LTE CAT-20: 2 Gbps / 150 Mbps	<b>Certifications</b>	FCC, CE, RoHS, E-Mark, PTCRB, Shock and Vibration Resistance: EN 61373:1999 IEC 61373:1999 Railway Applications: EN 50155 Electromagnetic Compatibility: EN 61000
<b>Recommended Users</b>	50-500	<b>Package Content</b>	MAX HD2 MBX, PSU (ACW-630), 4x Dual Band Wi-Fi Antennas (ACW-341), 1x GPS Antenna (ACW-232), 6x or 8x 2dBi 4G LTE Antennas (ACW-813), 1 Pair of Mounting Brackets (ACW-513), 1x SIM Cover
<b>Antenna Connectors</b>	6x or 8x SMA Cellular Antenna Connectors 1x SMA GPS Antenna Connector 4x RP-SMA Wi-Fi Antenna Connectors		
<b>Power Input</b>	DC Jack/Terminal Block: 12-56 V#		

## Ordering information

Product Code	Description	Embedded Modems	Carrier/Categories	5G Bands	LTE Bands
MAX-HD2-MBX-5GD-T	HD2 MBX 5G with 2x 5G modems	2	Global/5G	<b>5G (NSA) Sub 6Ghz:</b> n1, n2, n3, n5, n7, n8, n12, n20, n28, n38, n41, n66, n71, n77, n78, n79	B1, B2, B3, B4, B5, B7, B8, B12, B13, B14, B18, B19, B20, B21, B25, B26, B28, B29, B30, B32, B34, B38, B39, B40, B41, B42, B43, B46, B48, B66, B71

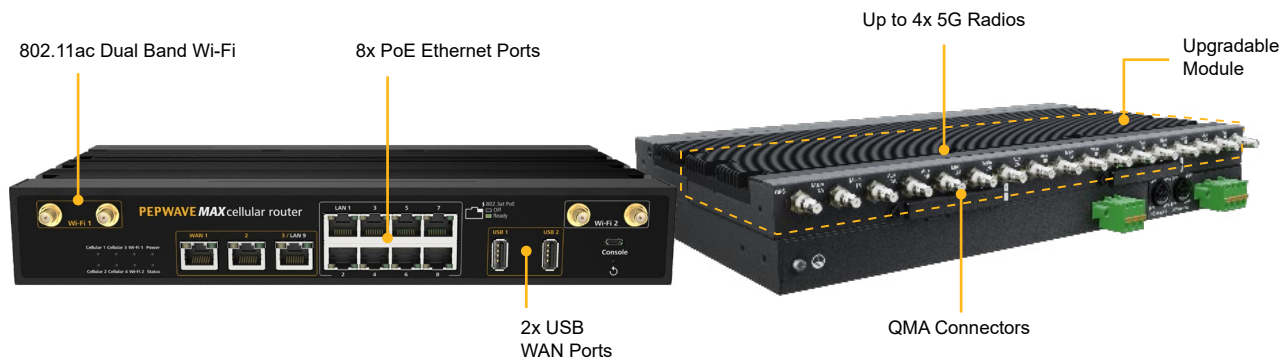
\*WAN 3 is configured as a LAN port by default, configuration is changeable on the Web Admin.

#2x 54V DC input is needed for all 8x LAN ports to have 802.3at PoE. Plugging in 1x 54V DC input will result in 4x LAN ports having 802.3at PoE.

®Theoretical maximum data rates.

\*MAX-HD2-MBX-5GD-K-T features 6x SMA Cellular Antenna Connectors. MAX-HD2-MBX-5GD-GLTE-G-T features 8x SMA Cellular Antenna Connectors.

# HD4 MBX 5G<sup>®</sup>



## Specifications

<b>WAN Interface</b>	4x Embedded Cellular Modems with Redundant SIM Slots 3x GE* 2x USB 2.0 Interface	<b>Power Output</b>	Up to Eight 802.3at PoE Outputs <sup>#</sup>
<b>LAN Interface</b>	9x GE*	<b>Power Consumption</b>	55 W (max.)
<b>Wi-Fi Interface</b>	802.11ac/a/b/g/n, 1166 Mbps 2x2MIMO Wi-Fi WAN and/or AP Simultaneous Dual-Band	<b>Dimensions</b>	1.7 x 11.5 x 7.0 inches 43 x 292 x 177 mm
<b>Router Throughput</b>	2.5 Gbps	<b>Weight</b>	7.28 pounds 3.3 kg
<b>PepVPN Throughput (No Encryption)</b>	600 Mbps	<b>Operating Temperature</b>	-40°– 149°F -40°– 65°C
<b>PepVPN Throughput (256-bit AES)</b>	500 Mbps	<b>Humidity</b>	15%–95% (non-condensing)
<b>5G Cellular Data Rate<sup>®</sup> (Downlink/Uplink)</b>	5G: 4 Gbps / 700 Mbps LTE CAT-20: 2 Gbps / 150 Mbps	<b>Certifications</b>	FCC, CE, RoHS, E-Mark, PTCRB, Shock and Vibration Resistance: EN 61373:1999 IEC 61373:1999 Railway Applications: EN 50155 Electromagnetic Compatibility: EN 61000
<b>Recommended Users</b>	50-500	<b>Package Content</b>	MAX HD4 MBX,PSU (ACW-630), 1x GPS Antenna (ACW-232), 1x QMA to SMA Adaptor, 4x Dual Band Wi-Fi Antennas (ACW-341), 1 Pair of Mounting Brackets (ACW-513), 2x SIM Cover * Cellular antennas not included. To enhance the MBX, Puma antennas are recommended.
<b>Antenna Connectors</b>	16x QMA Antenna Connectors 1x QMA GPS Antenna Connector 4x RP-SMA Wi-Fi Antenna Connectors		
<b>Power Input</b>	DC Jack/Terminal Block: 12-56 V <sup>#</sup>		

## Ordering information

Product Code	Description	Embedded Modems	Carrier/Categories	5G Bands	LTE Bands
MAX-HD4-MBX-5GD-T	HD4 MBX 5G with 4x 5G modems	4	Global/5G	<b>5G (NSA) Sub 6Ghz:</b> n1, n2, n3, n5, n7, n8, n12, n20, n28, n38, n41, n66, n71, n77, n78, n79	B1, B2, B3, B4, B5, B7, B8, B12, B13, B14, B17, B18, B19, B20, B25, B26, B28, B29, B30, B32, B34, B38, B39, B40, B41, B42, B46, B48, B66, B71

\*WAN 3 is configured as a LAN port by default, configuration is changeable on the Web Admin.

<sup>#</sup>2x 54V DC input is needed for all 8x LAN ports to have 802.3at PoE. Plugging in 1x 54V DC input will result in 4x LAN ports having 802.3at PoE.

<sup>®</sup>Theoretical maximum data rates

# Expansion Module for HD2 MBX



## Specifications

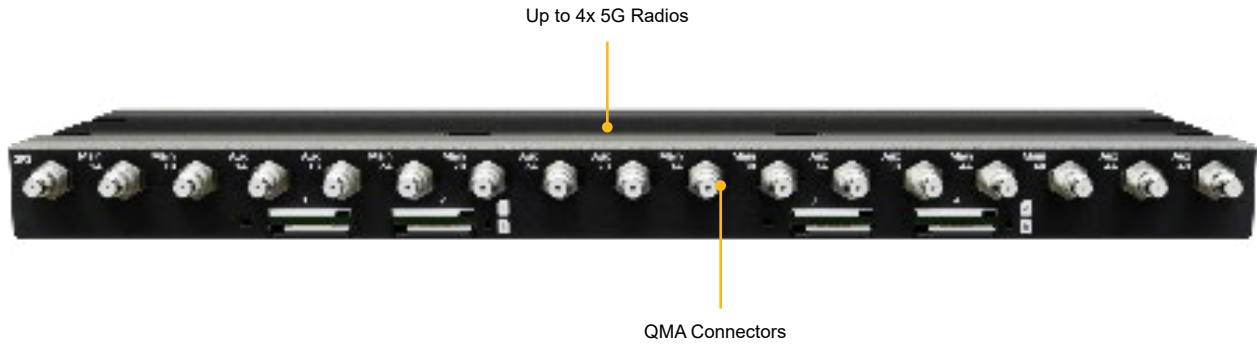
<b>Interface</b>	2x Embedded Cellular Modems with Redundant SIM Slots
<b>Antenna Connectors</b>	8x SMA Antenna Connectors, 1x SMA GPS Antenna Connector
<b>5G Cellular Data Rate® (Downlink/Uplink)</b>	5G: 4 Gbps / 700 Mbps LTE CAT-20: 2 Gbps / 150 Mbps

## Ordering information

Product Code	Description	Embedded Modems	Carrier/Categories	5G Bands	LTE Bands
EXM-MBX-T2-5GD	<b>Expansion Module</b> for HD2 MBX 5G with 2x 5G modems	2	Global/ 5G	<b>5G (NSA) Sub 6Ghz:</b> n1, n2, n3, n5, n7, n8, n12, n20, n28, n38, n41, n66, n71, n77, n78, n79	B1, B2, B3, B4, B5, B7, B8, B12, B13, B14, B17, B18, B19, B20, B25, B26, B28, B29, B30, B32, B34, B38, B39, B40, B41, B42, B46, B48, B66, B71

®Theoretical maximum data rates

# Expansion Module for HD4 MBX



## Specifications

<b>Interface</b>	4x Embedded Cellular Modems with Redundant SIM Slots
<b>Antenna Connectors</b>	16x QMA Antenna Connectors, 1x QMA GPS Antenna Connector
<b>5G Cellular Data Rate® (Downlink/Uplink)</b>	5G: 4 Gbps / 700 Mbps LTE CAT-20: 2 Gbps / 150 Mbps

## Ordering information

Product Code	Description	Embedded Modems	Carrier/Categories	5G Bands	LTE Bands
EXM-MBX-T4-5GD	Expansion Module for HD4 MBX 5G with 4x 5G modems	4	Global/5G	5G (NSA) Sub 6Ghz: n1, n2, n3, n5, n7, n8, n12, n20, n28, n38, n41, n66, n71, n77, n78, n79	B1, B2, B3, B4, B5, B7, B8, B12, B13, B14, B17, B18, B19, B20, B25, B26, B28, B29, B30, B32, B34, B38, B39, B40, B41, B42, B46, B48, B66, B71

®Theoretical maximum data rates